

Acoustic absorbent decorative material

PRESENTATION

Acoustic absorbent decorative material made of melamine fibre finished with fabric. Available in two sizes.

ADVANTAGES

Improvement of the absorbent response and reverberation times for all type of premises. It doesn't fray. No particles detach. It does not lose weight due to deterioration. It does not require installation. Wide range of colours that can be combined to achieve aesthetic, beautiful and elegant environment.

APPLICATIONS

Multi-purpose rooms, office buildings and private offices, restaurants, bars, cafeterias, radio stations, studios, home-cinema, TV sets, cinemas, theatres, rehearsal rooms, shops, museums, exhibition rooms, department stores, hotels, hospitals, clinics, etc.



TECHNICAL DATA

Material: Melamine resin.

Finish: Fabric according to standard colour range.

Performance: Pure absorbent.

Dimensions Small Cube: 380 x 380 x 380 mm.

Dimensions Large Cube: 500 x 500 x 500 mm.

Weight Small Cube: 0.95 Kg/Ud.

Weight Large Cube: 1.85 Kg/Ud.

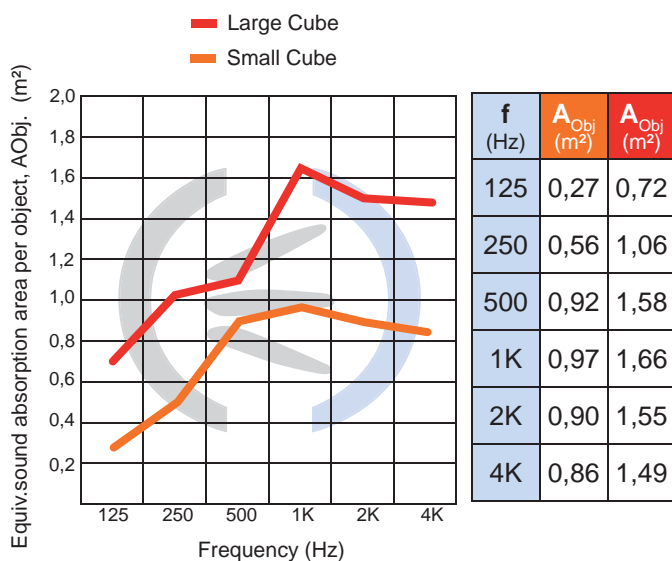
Fire performance:

-Base product: Bs1d0 in thickness of 5 mm. according to EN 13501-1.

-Acustiart fabric: Bs1d0 according to AITEX Nº 14AN2696.

Acoustic absorption: APPLUS Nº 13/7139-2968 for Small Cube and nº13/7139/2969 for Large Cube.

PICTURES



	Small	Large
Average sound absorption index α_m :	1	1
Sound absorption class:	A	A

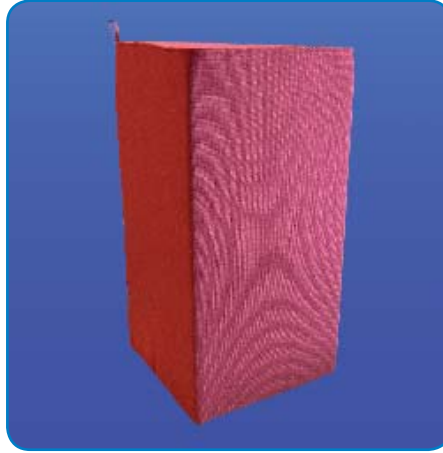
ASSEMBLY INSTRUCTIONS

ACUSTIART CUBE does not require specific assembly instructions.

Combined with other **ACUSTIART** of the same series evenly distributed throughout the premises. The acoustic performance and comfort of the room will increase depending on the absorbent surface area.



ACUSTIART 3DM



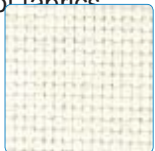
ACUSTIART BRICK



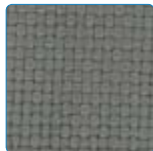
ACUSTIART TOTEM

DIAGRAMS/PLANS

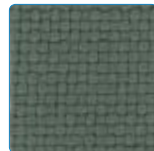
Sample of fabrics



4001-White



4602-Silver



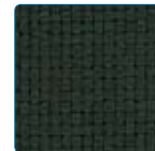
4452-GreyGreen



4603-Titanium



4605-Anthracite



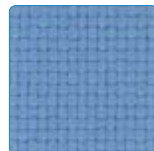
4453-Carbon



4460-Green



4457-Turquoise



4352-Sky-Blue



4301-Mediterranean



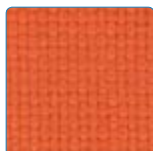
4307-Cobalt



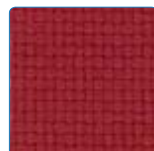
4302-Ocean



4051-Vanilla



4102-Orange



4203-Red



4206-Cherry



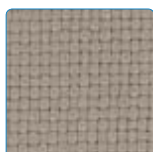
4207-Carmine



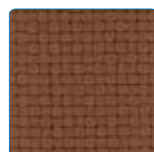
4552-Clay



4504-Ivory



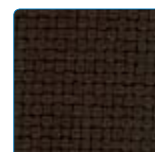
4501-Natural



4555-Brown



4554-Coffee



4556-Chocolate



4651-Black

