

Acoustic absorbent decorative material

PRESENTATION

Acoustic absorbent decorative material composed by melamine fibre finished in fabric.

ADVANTAGES

Improves the absorbent response and reverberation times for all type of premises. It doesn't fray. No particles are set free. It does not lose weight due to deterioration. It does not require installation. Wide range of colours that can be combined to achieve nice, aesthetic and elegant environments.

APPLICATIONS

Multi-purpose rooms, offices, private offices, restaurants, bars, cafeterias, radio stations, studios, home cinema, TV sets, theatres, rehearsal locations shops, museums, exhibition rooms, large department stores, hotels, hospitals, outpatient clinics, etc.



TECHNICAL DATA

Material: Melamine resin.

Finish: Fabric according to standard colour range.

Support: Decorative base in stainless steel

Performance: Pure absorbent.

Standard dimensions: 380 x 380 x 2,000 mm.

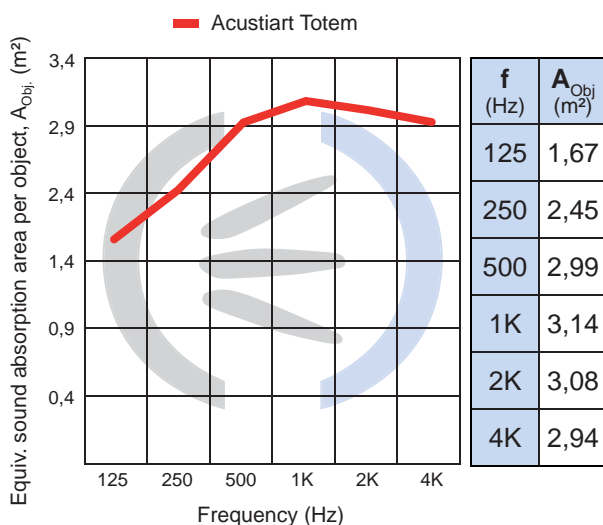
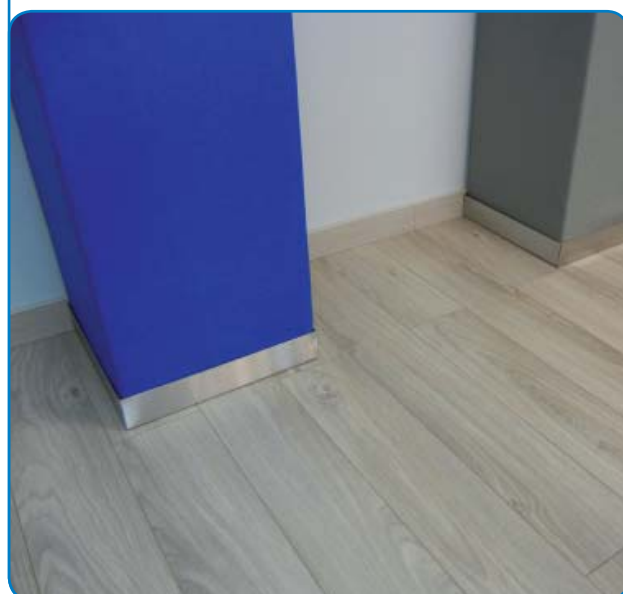
Weight: 7 Kg/Unit.

Fire performance:

- **Base product:** Bs1d0 in 5 mm thickness. According to EN 13501-1.

- **Acustiart fabric:** Bs1d0 according to AITEX N°.14AN2696.

Acoustic absorption: APPLUS N°.13/7139-2971.



Acustiart Totem	
Average sound absorption index α_m :	0,95
Sound absorption class:	A

ASSEMBLY INSTRUCTIONS

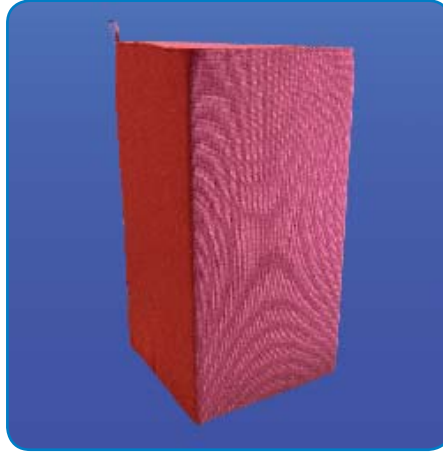
ACUSTIART TOTEM does not require specific assembly instructions.

Combining with other **ACUSTIART** of the same series evenly distributed throughout the premises.

The acoustic performance and comfort of the room will increase depending on the absorbent surface area.



ACUSTIART 3DM



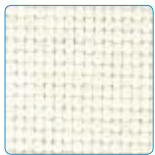
ACUSTIART BRICK



ACUSTIART CUBE

DIAGRAMS / PLANS

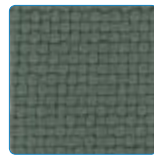
Sample of fabrics:



4001-White



4602-Silver



4452-GreyGreen



4603-Titanium



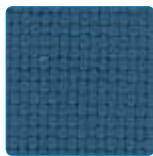
4605-Anthracite



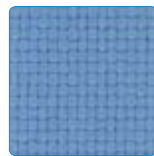
4453-Carbon



4460-Green



4457-Turquoise



4352-Sky-Blue



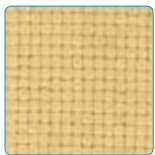
4301-Mediterranean



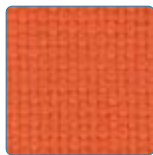
4307-Cobalt



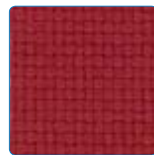
4302-Ocean



4051-Vanilla



4102-Orange



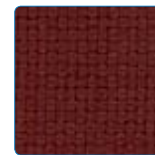
4203-Red



4206-Cherry



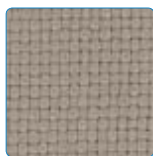
4207-Carmine



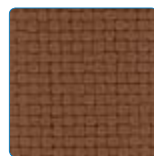
4552-Clay



4504-Ivory



4501-Natural



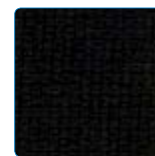
4555-Brown



4554-Coffee



4556-Chocolate



4651-Black

