

Curve decorative absorbent panels

PRESENTATION

Acustiart Curve are panels with identical characteristics as the Acustiart although with a slight curvature ideal to build absorbent volumetric surfaces in the form of a baffle, acoustic islands or acoustic clouds. Installation both on walls and ceilings. Infinite possibilities.

ADVANTAGES

Improves the absorbent response and reverberation times for all kind of premises where the standard solutions are not possible. Easy installation. Innovative design. Wide range of colours that can be combined to achieve aesthetic, beautiful and elegant atmospheres.

APPLICATIONS

Multi-purpose rooms, offices, private offices, restaurants, bars, cafeterias, radio stations, studios, home cinema, TV sets, cinemas, theatres, rehearsal locations, shops, museums, exhibition rooms, large department stores, hotels, hospitals, outpatient clinics, gyms, etc.



TECHNICAL DATA

Structure: Aluminium.

Absorbent filling material: Acustifiber F.

Performance: Absorbent.

Finish: Fabric. Colours to choose according to standard colour range.

Dimension: 1200 x 600 mm.

Thickness: 50 mm. **Weight:** 4.5 Kg/m².

Reaction to fire:

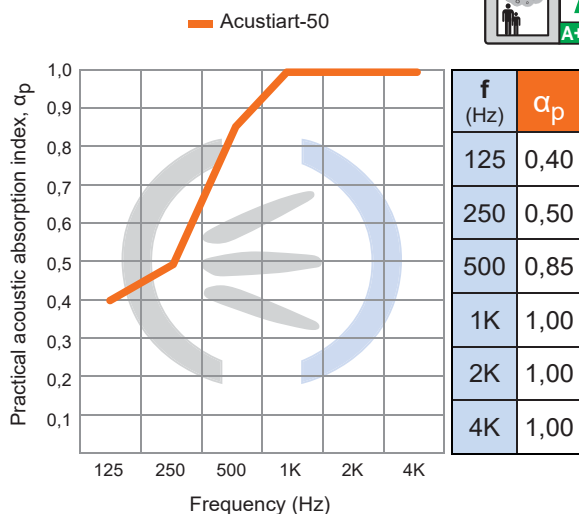
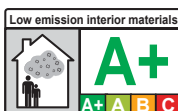
-Filling: Bs2d0 according to **AITEX** N° 14AN2697.

-Acustiart fabric: Bs1d0 according to **AITEX** N° 14AN2696.

Acoustic absorption: APPLUS n° 11/4191-2913.

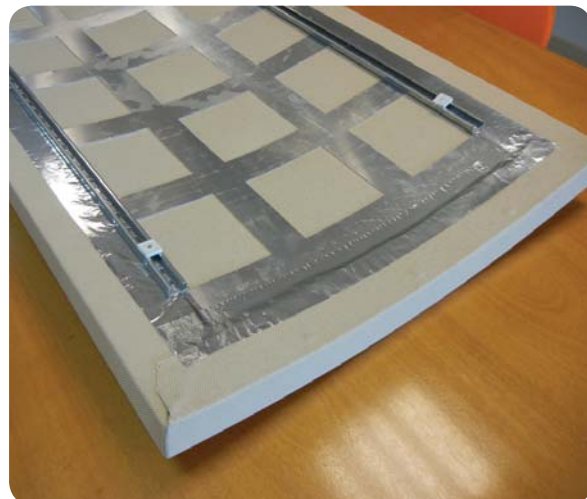
Test performed on false ceiling configuration.

Particle emission (COV): Classification A+



Acustiart-50	
Average sound absorption index α_m :	0,95
Weighted sound absorption index α_w :	0,80
Acoustic absorption class:	B

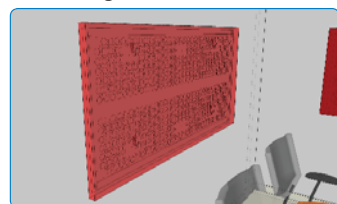
IMAGES



ASSEMBLY INSTRUCTIONS

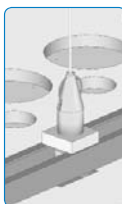
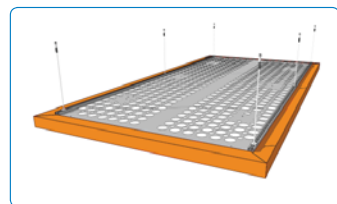
Handling

The **Acustiart Curve** panels are very delicate elements and must be handled with the utmost care and caution. They are supplied with a protective plastic to prevent deterioration during transport, handling and installation. This plastic should be removed very carefully, as you are using cutting objects, to not damage the product's fabric. Due to its size and weight we recommend it is handled and installed by two operators.



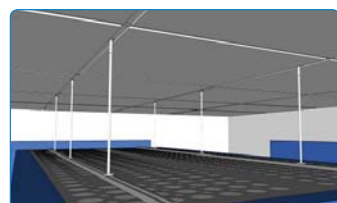
Wall mounting "Wall fixing kit" (optional)

Anchoring with hooks: Make the holes on the wall to anchor the hooks. Fix the hooks to the wall, using the suitable wall plugs. Hang the **Acustiart**, introducing the hooks fixed to the wall through the holes on the back part of the baffle. Check that the **Acustiart** is well levelled.



Ceiling mounting - "Ceiling Fixing Kit" (optional)

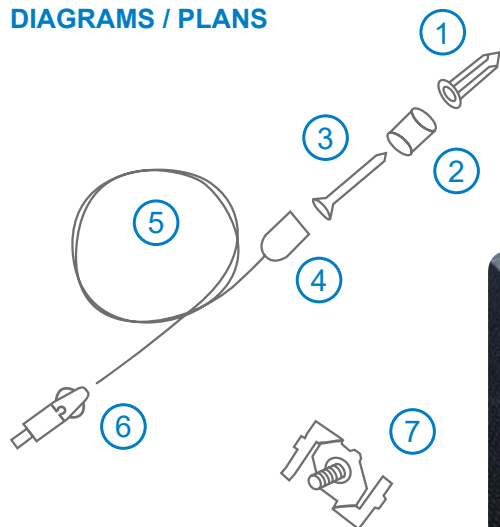
Drill and insert the wall plug (1). Screw the lag bolt (3) passing it through the fixing piece (2). When it is well tightened, screw the fixing piece (4) through which we will have previously inserted the steel wire (5). This will be introduced and passed through the fixing piece (6). We will press the button to release the passing of the wire and will release it at the desired length.



Ceiling mounting – Suspended by metal clip (7)

Systems specially recommended to hang Acustiarts in cases with standard sections ceilings, without having to make holes. It is recommended to verify the admissible weight of the existing ceiling and to reinforce it if necessary. To do so, use the special clip for sections (7) included in the "Ceiling Fixing Kit".

DIAGRAMS / PLANS



Ceiling Fixing Kit (Optional) - Content

- (1) - 4 Multi-wall plugs.
- (2 y 4) - 4 steel wire support pieces.
- (3) - 4 Lag bolts.
- (5) - 4 Steel wires.
- (6) - 4 units Threaded support with stopper for steel wire.
- (7) - 4 units Clip for standard ceiling sections.



Fabric samples

